

West Han Artifacts of Han
Yangling Mausoleum Museum,
Maoling Mausoleum Museum, and
Xiayang Museum in Xi'an

Li Jiajun

Art Museum

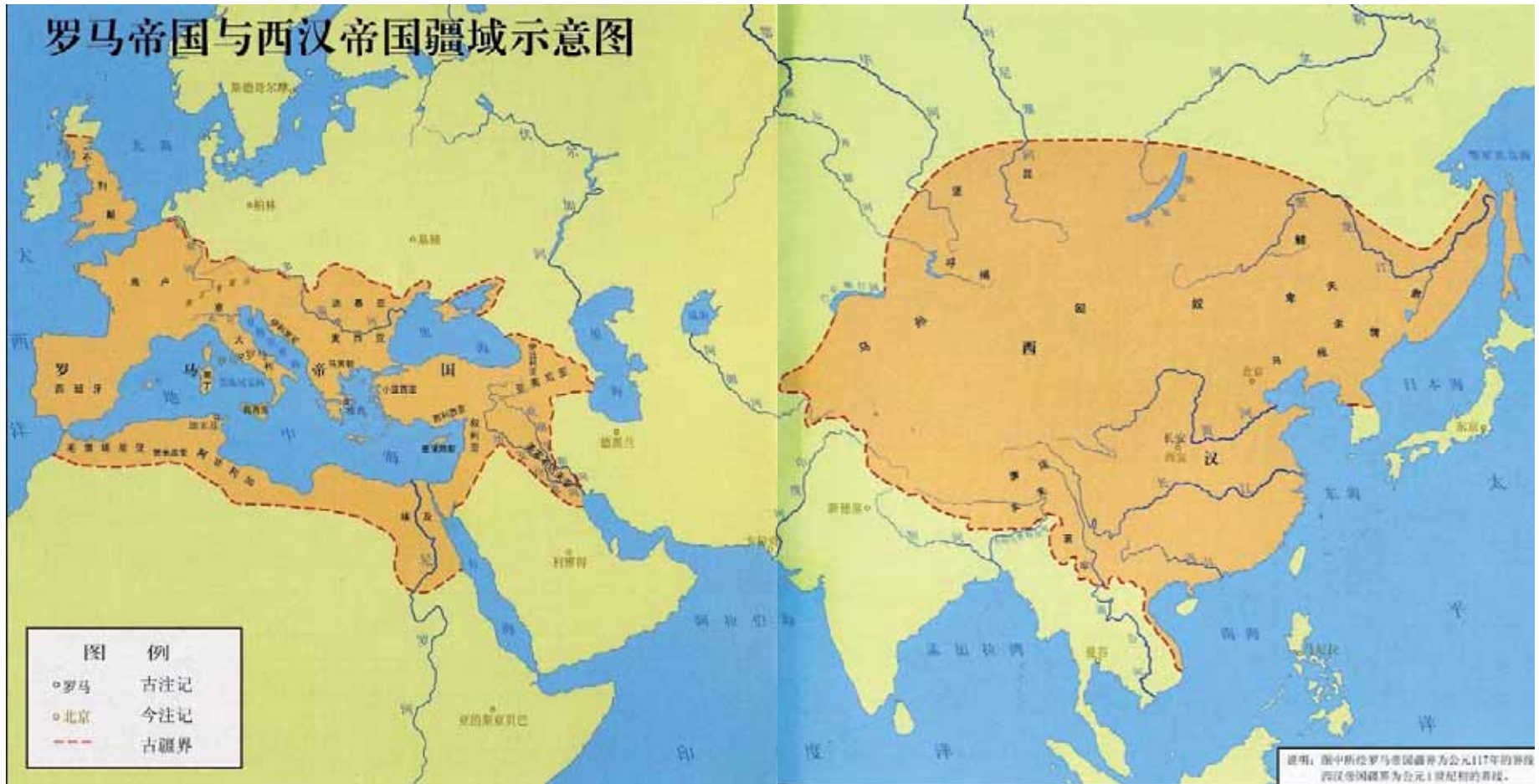
Xi'an Jiaotong University

Introduction

- West Han Dynasty sets its capital in Chang'an (the nowadays Xi'an) from 206 BC to 8 AD. It passes down the unified centralization ideology of Qin Dynasty featuring totalitarianism. The society, culture and civilization of West Han empire are further consolidated and developed, pushing the ancient China into its first zenith. West Han Dynasty fuels the rise of the world largest individual nationality-Han, which is named as the main identity of China. Also, it advances the growth and development of the Chinese civilization, including the mandarin language and characters that have been used up to now by the largest number of people in the world. The West defines as sinology all the studies concerning China. The social and economic growth of West Han dynasty lays a solid foundation for the feudalist economy of the following two millennium.
 - In the third year under Han Martial Emperor's reign title of Jianyuan, the Emperor, Liu Che, dispatched Zhang Qian on a mission to the West Region, greatly speeding up China's economic and culture ties and exchanges with central Asian, west Asian and European countries. And this is the famous "Silk Road".
-

-
- The scientific and technological developments of West Han are splendid, especially in such aspects as mathematics, astronomy, calendar, medicine, architecture and iron manufacturing etc. A comprehensive introduction and analysis will be done upon the various artifacts collected and exhibited in Han Yangling Mausoleum, Han Maoling Mausoleum, and Xianyang Museum as follows to jointly delve into the civilization of a bygone empire of two thousand years ago.
-

Territory Map of West Han Empire and Roman Empire from 206 BC to 8 AD



Han Yangling Mausoleum Museum is located on the bank of Weihe river in the northern suburb of Xi'an, erected on the burial site of West Han Jingdi Emperor and his empress consort Wang.

External View of Han Yangling Mausoleum Museum



West Han War Horse



Han Emperor Jingdi, Liu Qi, is the fourth emperor of West Han Dynasty, ruling the country for 17 years. Under his reign, he reduced the taxation, alleviate the criminal penalty, promote the intermarriage with the Hun, and boost the agricultural development. According to the historical record, the society was “amassed with so many copper coins that they turn too rusty to be evaluated and with such a large grain reserve that the grain is flowed out, getting too riot to be consumed.” The emperor ushers in the gold era of national affluence and friendly neighboring relations together with his predecessor, Emperor Wendi, Liu Heng, and lays a solid foundation for his successor, Martial Emperor, to expand the empire’s territory.



Various painted potteries



Excavation site of animal potteries



A corner of exhibition hall

Through over thirty years of archaeological explorations and excavations, it is concluded that **Han Yangling Mausoleum** consists of the emperor's burial garden, the empress's burial garden, the northern and southern burial pits, ritual architectures, satellite tomb garden, cemetery of criminal labors, and Yangling village etc. In the four corners of Emperor Jingdi's mausoleum are 81 beam-like burial pits and over 10000 satellite tombs of civil and military officials. A great many exquisite archaeological finds were found from more than 200 burial pits on the site, exhibiting the profound Han culture.

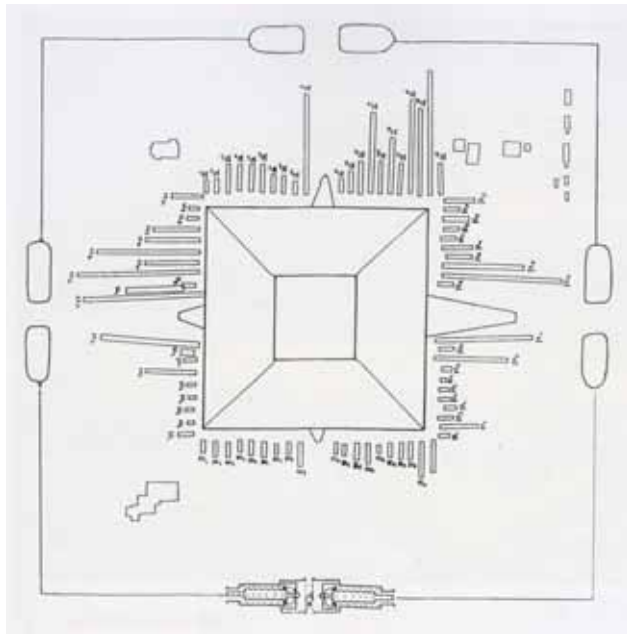
The site of water pipe



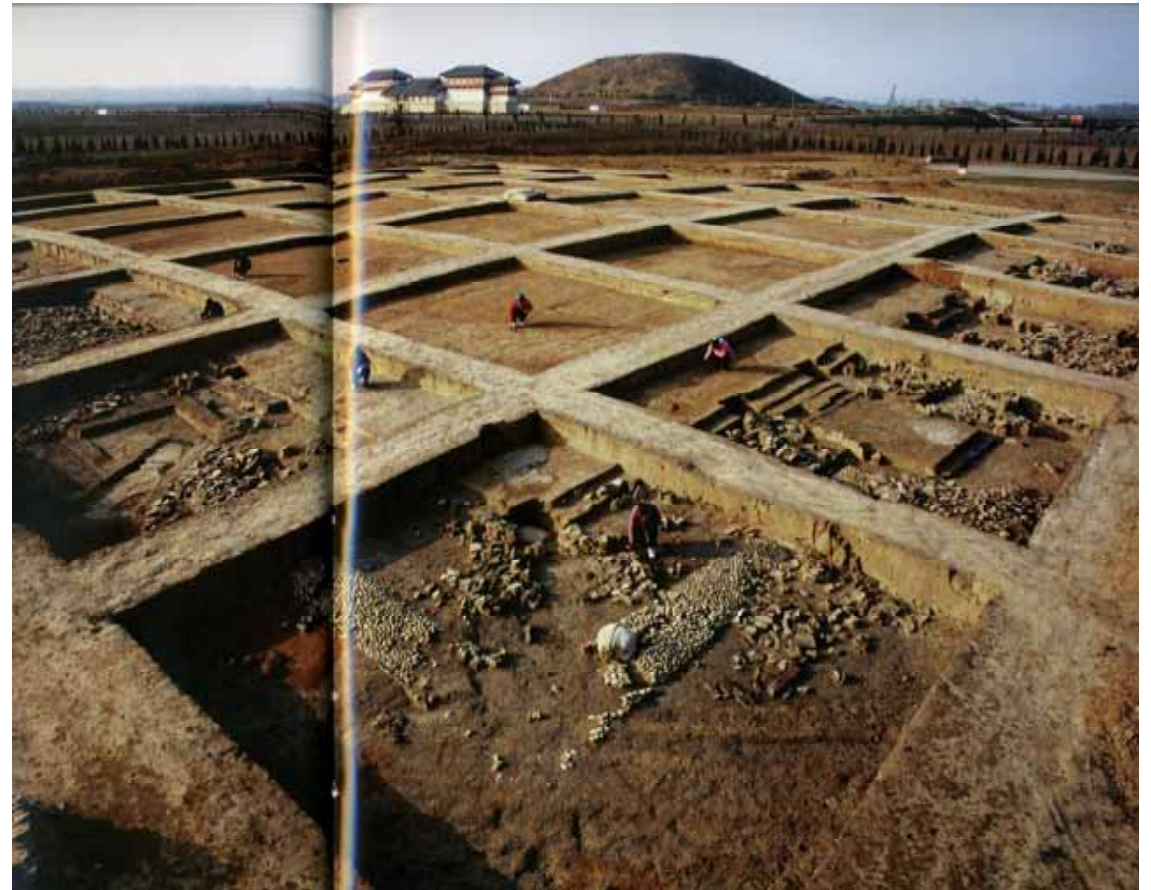
Pottery-making workshop

The eaves tile inscribed with longevity





Plane map of Emperor Jingji's Mausoleum



Archeological excavations on the site of the Mausoleum



Plane Map of Remains on Han Yangling Mausoleum



Eaves Tiles
Inscribed with
Yangling (Han
Emperor Jingdi's
Mausoleum)



Hollow Brick with
An Azure Dragon



Hollow Brick with
rectangular spirals



Iron tools: the saw, chisel, spade, and adze



3



6



Copper pulleys
Copper components





Clay animals

Site of Excavation

图九 K11发掘现场



Pottery stove



House-shaped Pottery Granary

Painted Pottery Ding



Pottery kitchen-ware

Pottery ladle



Millet-filled painted pottery jar



Copper balancing weights



Copper Measurement Tools



Square Granary

汉阳陵博物馆



Copper arrowheads, Iron spearheads, iron sword, and iron halberds



Gold blocks and Jade Bi



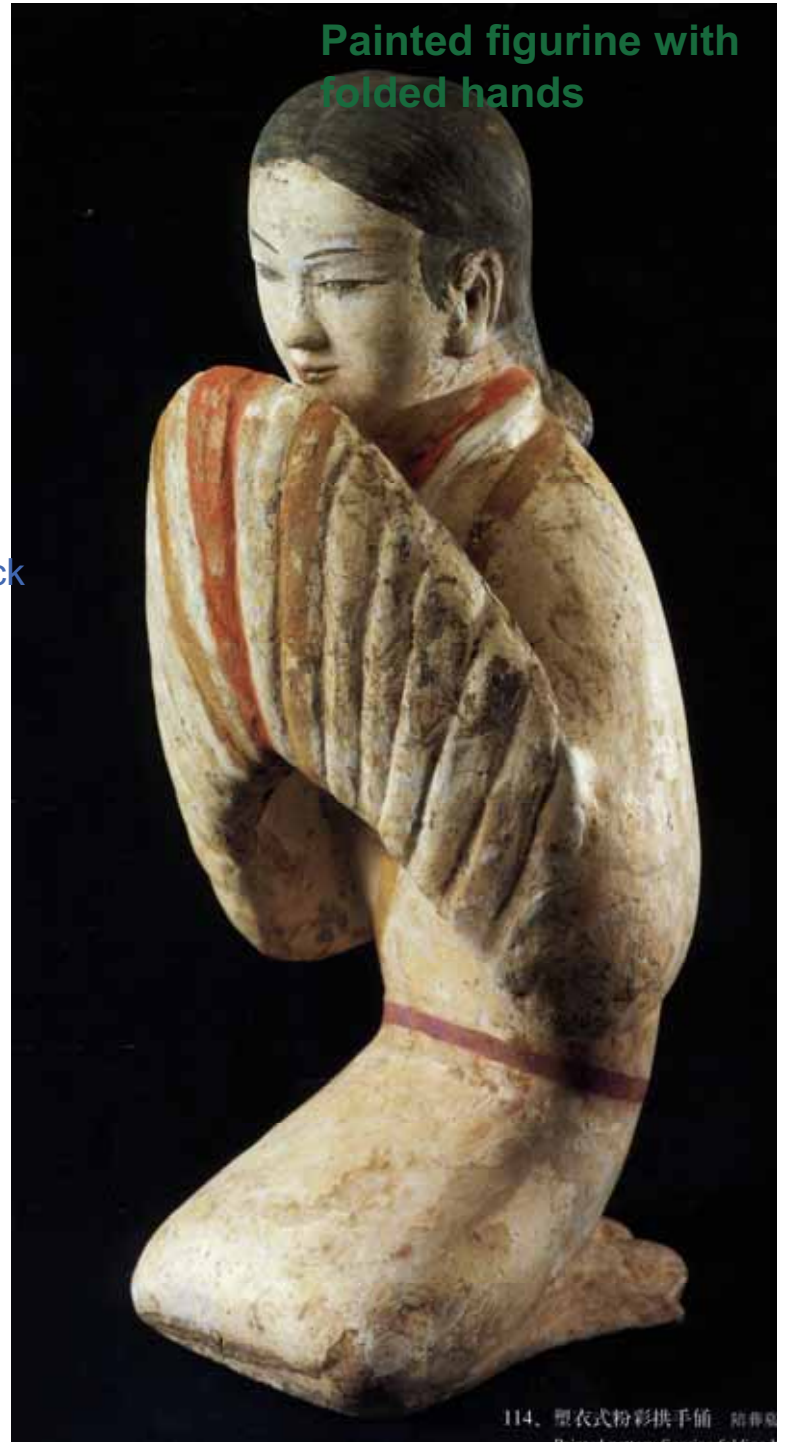
Amour-clad clay warrior

Site of excavation





Head of the painted warrior and its back



Painted figurine with folded hands

Han Maoling Mausoleum Museum

Maoling Mausoleum is the mausoleum of the fifth West Han emperor, Liu Che, being the largest one among all the imperial mausoleums of West Han Dynasty. On the site are more than 20 satellite tombs, belonging to Consort Li, the favored concubine of Martial Emperor, General Wei Qing, General Huo Qubing, Huo Guang and Jin Midi etc. The historical objects remained here are exceptionally rich. Such valuable Han artifacts as the Han hollow brick bearing the gods of four directions, gold gilt horse, gold and silver gilt incense burner, gold and silver inlaid bronze rhino, and jade knocker with gods of four directions that are uncovered now provide the important references to study the West Han history and the artistic and esthetic tastes.



The large-scale stone carvings displayed in front of General Huo Qubing's Tomb are the earliest and the most preserved stone carving treasures, which are incredibly important to study the stone carving art, burial rituals, and the Sino-west exchanges of the West Han Dynasty. Meanwhile, the stone carvings on the site of General Huo Qubing's Tomb has become an important part of the world cultural heritage owing to the fact that they are the cream of the trove of the Chinese stone carvings.



Mausoleum of Han Martial Emperor



Tomb of General Huo Qubing





The lying-down ox



Jade knocker with Gods of Four Directions



A human being and a breast



The Leaping Horse



Gold gilt bronze horse



Gold gilt bamboo-shaped incense burner



Bronze Yan (cooking utensil)

Bronze leaking pot (time meter)



Bronze bell

Hollow brick with white tiger



Hollow Brick with an azure dragon





Cross-bow trigger



bend-joint water pipe



Clay b



Bronze rhino



Hollow brick with a vermillion bird



White jade boar



Eaves tile inscribed with longevity



Gold gilt tiger



Hollow brick with a black turtle



Naked pottery figurines



Bronze knockers



Pottery coffin



Warming stove with a chain



Pottery kitchen range



Clay boar



Clay dog



Clay ox



Clay rooster



Bronze Ding



Bronze jar



Bronze mirror



Inscribed eaves tile



Hollow brick with geometric patterns



Gilt lacquer eared cups



Wine warming utensil

Xianyang Museum is located in Zhongshan street of the ancient city of Xianyang. It mainly shows the collections of Qin and Han dynasties. And the three thousand figurines of West Han painted warriors and horses are the most famous.



Xianyang Museum exhibits mainly the three thousand figurines of painted warriors and horses excavated from Yangjiawan on the sacrificial pit of Changling Mausoleum of the first Han emperor in 1965, including Han jade horse, jade figurine head, and painted figurines of conductors. The three thousand painted warriors and horses excavated in Yangjiawan in August of 1965 are a large-scale formation that have been discovered as the earliest so far in China. It depicts the image of West Han imperial armed escorts, having a cavalry of 583 and an infantry of 1965.



The military formation demonstrates the strict order, morale power, and exquisite painting, making people realize the different historical and culture profiles of Qin and Han dynasties.



Terra-cotta Warriors of Qin first emperor's Mausoleum

Head of a Han Jade Figurine



Various warriors and horses



Jade bear



Jade dove



Jade lucky charm

Jade Yuren (a celestial being) riding a horse



-
- **Han Chang'an city is catapulted rapidly from a forsaken land to a center in China in every possible aspect. It sets Confucius culture as the basis of Chang'an culture and spawns varied civilizations, which prevail in the city centered on Chang'an. On the basis of the indigenous Qin and Han cultures, it has absorbed widely cultures from kingdoms of Qi, Lu, Yan, Zhao, Wu and the Central Plain Wei and Han and even from ethnic minorities as well as from abroad, rendering Chang'an culture profound accommodating, sophisticated and vigorous. The then Chang'an culture could be described as extensive and profound.**
 - **In addition to absorbing and accommodating, Chang'an culture is always in quest of new things. Zhang Qin explored the diplomatic ties before the westerners did, opening up the earliest "Silk Road" known to the whole world and exemplifying a huge exploration of the outside world by the Chinese. It establishes Chang'an as the starting point of Silk Road, bridging the Sino-west communication.**
-

-
- **Through thousands of years of development, West Han culture and civilization have undergone changes to political regimes and invasions of foreign tribes. Yet they have never been disrupted or dissolved, being a unique wonder in the world. Nowadays, a large number of archaeological objects have been uncovered in the surroundings of Xi'an. The cavalry accounts for 34% among the warriors and horses displayed in Xianyang Museum, becoming the main force of the West Han empire. The historical record stated that 50,000 horses had been counted as a miracle in the ancient Persian empire. And the West Han empire had 400,000 horses, which were so many that the traffic jam was caused in Chang'an city. The various pottery animals and architecture components in Han Yangling Mausoleum and Maoling Mausoleum enlighten people of the social affluence and prosperity of the then West Han dynasty. And the Han painted female figurine exhibits a striking charm with its delicate contours, the artistic creativity of which merits our admiration. It represents a fashion.**
 - **The West Han civilization and development have exerted a far-reaching impact. It plays an immeasurable role in advancing the Sino-west growth and development. These splendid treasures left by people of two thousand years ago will be a legacy to the whole world and the whole humanity.**
-

Thank You!
