

Creation and Application of Japanese Historical Gazetteer – Ontological Approach to Geographical Name and Place –

日本歴史地名辞典データベースシステムの構築—地名オントロジの視点から—

Presentation 1 :

Ikuo Oketani, Human Sciences, Osaka International University

Oketani@hus.oiu.ac.jp 桶谷猪久夫(大阪国際大学)

Presentation 2 :

Mitsuru Aida, National Institute of Japanese Literature

aida@nijl.ac.jp 相田 満(国文学研究資料館)

I will add the explaining to the contents.

- We are developing the database for the index of *Dainihon Chimeijisho*.
- *Dainihon Chimeijisho is a Dictionary of Place Names in Japan.*
- It provides the detail explanation of the historical investigation and change of place names such as country names, names of mountains, rivers, lakes and harbors and so on.

Details of the database for the index of *Dainihon Chimeijisho* is...

- The items of the name included in the database are as the following.
- 日本(Japan) 52,547
 - 北海道(Hokkaido) 2,585
 - 琉球(Ryukyu [沖縄 Okinawa]) 879
 - その他(Others[Honshu,Shikoku,Kyuushu]) 49,083
- * Items except for Hokkaido and Ryukyu are as the next.
 - 北海道と琉球を除く内訳
 - 樺太(Karahuto) 467
 - 台湾(Taiwan) 942
- 合計(Total) 53,956
- These items have the way of reading it and information on the page as an attribute.
- Mr.Oketani is adding GIS information to it.



The fields of the database is as the following.

番号	Number
地名	Place Names
ヨミ	Reading Information
ローマ字ヨミ	Romanized Reading Information ※
国(旧国郡)	Country names (Old-Type)
巻	Volume
ページ	Page
大項目名	Big Item Name
緯度	Latitude ※
経度	Longitude ※
備考	Note ※
※ is the information added newly	

About *Dainihon Chimeijisho*

大日本地名辞書の索引入力

- ***About Dainihon Chimeijisho***
 - The 1' st *Dictionary of Place Names in Japan*
- **Writer : YOSHIDA, Togo (by himself)**
 - 吉田東伍 1864-1918
 - Born at Kanbara-City Niigata-Ken (Now Agano-City)
- **1895 start writing**
 - 1904-05 the Russo-Japanese War
- **1907 the 1' st edition (total 12 volumes)**
- **1909 sequel**
- **Over 12,000,000 Characters**



Based items of the *Dainihon Chimeijisho*

- The Original book had been based on “Wamyou–Ruijushou(Wamyou–shou)” 41,000items.
 - 和名類聚抄(和名抄): 10volumes or 20volumes
 - in the 20volume–book there are seasonal words(歲時),government post(官職),place–names(国郡名)
 - Edited by MINAMOTO,Shitagou(源 順 911–983) lived in Heian–piriod
- Togo Yoshida supplemented other name places
 - For example Tohoku,Hokkaido,Ryukuu,Karahuto,Taiwan

What kind of thing will be clear by the historical Japanese place-names database?

- **What kind of name is being used most abundantly?**
 - It is difficult to get the electronic data of the reading information on the name data on the Japanese whole country.
- **At first It pays attention to same names.**
 - 同一地名に着目
- **And the next, how much does the same groups of names exist in the Japan?**
 - 日本国内には、同じ地名群がどれだけ存在するのか。
- **For example. The most names are “余戸”….**
 - Temporarily, let's pronounce “Yodo”.
- **So I will consider this case.**
 - This compared the string which corresponded simply.
 - That is pronounced with Amabe, Amarube, and so on.

This is the result that most names were looked for by the kanji character.



82	余戸郷	アマ	Ama
59	山田	ヤマガタ	Yamagata
47	神戸郷	カンベ	Kanbe
46	国府址	コウ	Kou
40	国分寺	コクブジ	Kokubuji
38	太田	オオタ	Oota
34	大野	オオノ	Oono
33	駅家郷	ウマヤ	Umya
33	中野	ナカノ	Nakano
31	大谷	オオタニ	Ootani

“余戸郷” shared the top score.

Distribution of “余戸” & “余戸郷” is this.

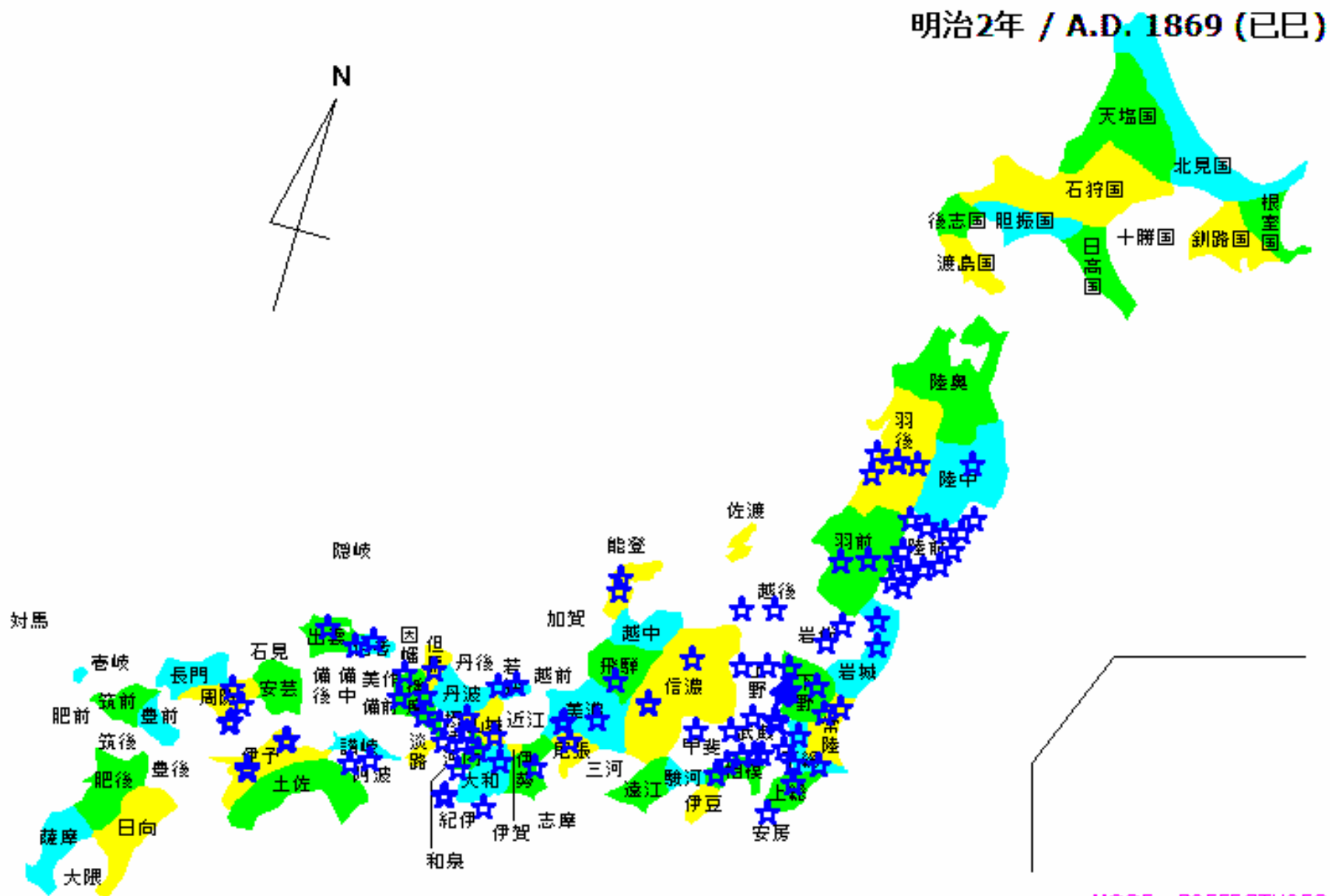
The number of appearances

余戸郷	82
余戸	2

Distribution by the country 国別分布

13	余戸郷	アマリ amari	陸前 Rikuzen
7	余戸郷	アマリ amari	武蔵 Musashi
5	余戸郷	アマベ amabe	摂津 Settu
4	余戸郷	アマベ amabe	播磨 Harima
4	余戸郷	アマリベ amaribe	羽後 Ugo
3	余戸郷	アマ ama	下野 Shimotsuke
3	余戸郷	アマベ amabe	周防 Suou
3	余戸郷	アマベ amabe	下総 Shimotsuke

This is the distribution of “余戸” & “余戸郷”, which is visualized by the map.



We must be careful that a place-name of Japan is changeable.

- Japanese name changes variously in the association by “the pronunciation” and “the indication”.
 - 日本の地名は「発音」や「表記」による連想で多様に変化する。
- For example...
- 二荒 → 日光 (“Hutara changed to Nikoou” is a famous case.)
 - 二荒 “hutara” is a original pronunciation.
 - It called as “nikou” by the kanji character’s pronunciation.
 - So the notation of the “nikou” also changed to “日光 nikkou”.
 - “Nikkou” means a sunlight,it became liked it and it used because there was meaning which symbolized the matter ,that was happy.
- Note
- The first example when the government ordinance which a name is changed from is announced.
 - 『続日本紀』巻6和銅六年（七一三）五月甲子《癸亥朔二》◆五月甲子。制。畿内七道諸国郡郷名着好字。...

Then, we must take care of pronunciation, too.

There is much pronunciation in “余戸” like this.

ヨミの分布

26	余戸郷	アマリ amari	大和
25	余戸	アマベ amabe	伯耆
18	余戸	アマルベ amarube 	出雲
8	余戸郷	アマルヘ amaruhe	陸前
3	余戸郷	アマリベ amaribe	摂津

“Amarube” is famous as “余部”.

The appearance pattern of “amari”

26	余戸郷	アマリ amari	大和
3	余戸郷	アマリベ amaribe	摂津
1	甘利	アマリ amari	甲斐

Remark it!

- There is a name to spread for another indication with being the same pronunciation, too.
- At present, as for the name which has the pronunciation of “Amarube”, what is being written with “余部” is the most famous.
- Because...

What is “余戸”?

- From the first “余戸” was a common noun.“
 - 普通名詞
- It is the origin of the area name to call the small village which didn't reach fifty houses “the rest door village ” in the ancient state age.
 - 律令国家時代、50戸に満たない小集落を「余戸郷(あまりめのさと)」と呼んでいたことが地区名の由来。明治以降の村名、余土は、余戸が転じたもの。
 - <http://www.ehime-catv.co.jp/j/contents/mati/17.html>
 - ただし、六国史・延喜式には「余戸」の用例無し

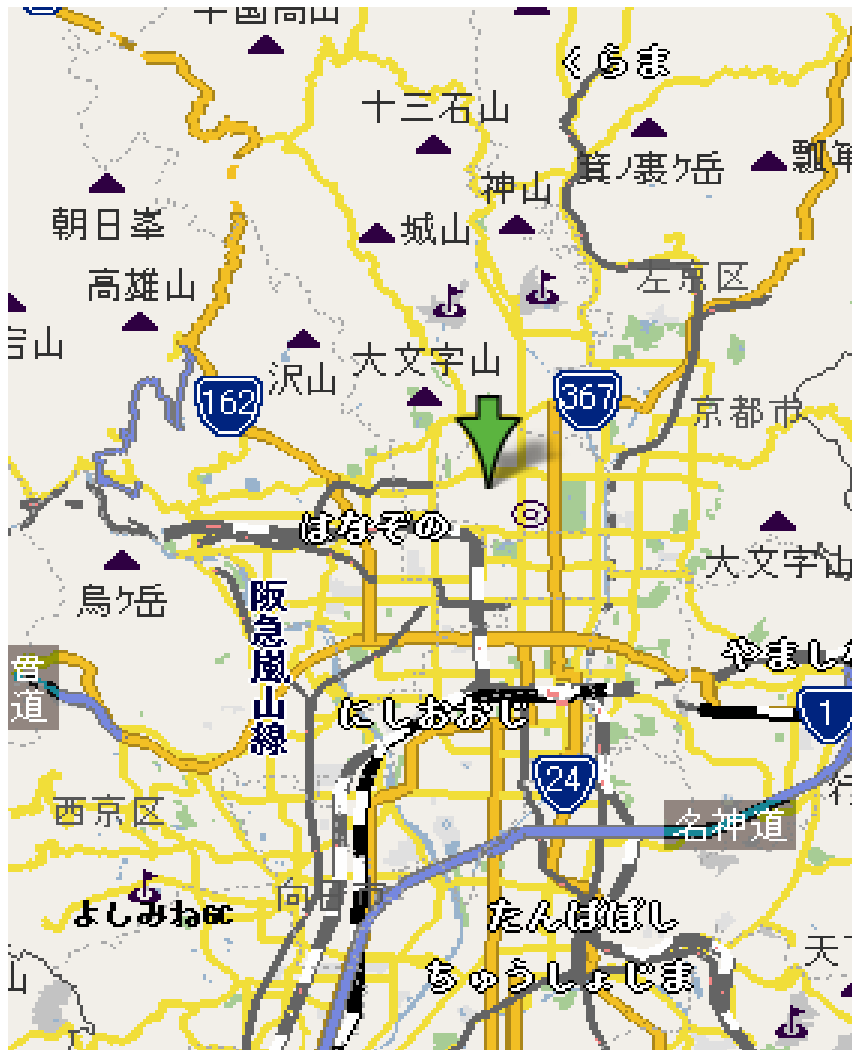
This method is based on the idea pattern of the ex-modern people.

- A name to do like this and which is accumulated is based on the idea pattern of the ex-modern people.
- A cause does the origin in the cultural character of Japan which has the double language structure of the kanji and the kana.
 - 二重言語構造による意味の拡散
- Fresh development is born when a name meeting like this and GIS information are added.
- Then, we should think about one more.

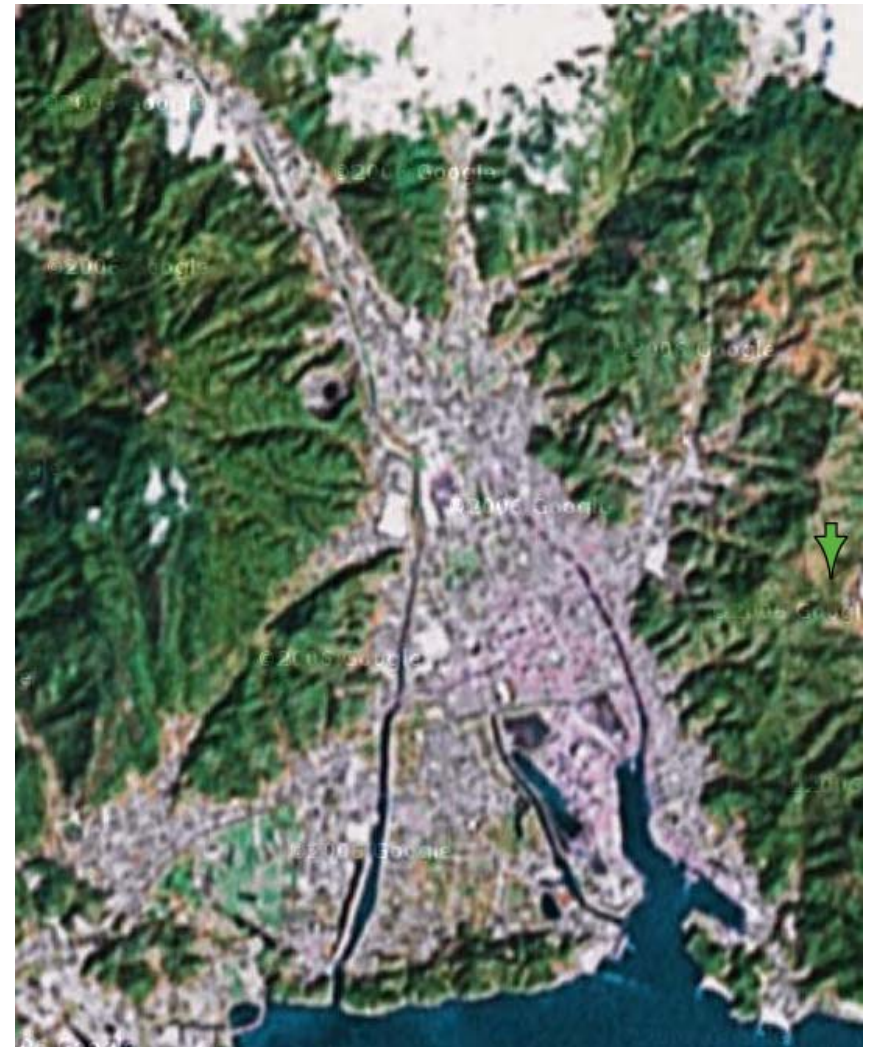
It is the morpheme of the place-name.

- For instance,
- The morpheme of “Kamo” exists 179 cases.
- “Kamo” is based on “the Kamo-shrine” of Kyoto.
 - 「カモ」を考える? ……小京都

Kyoto



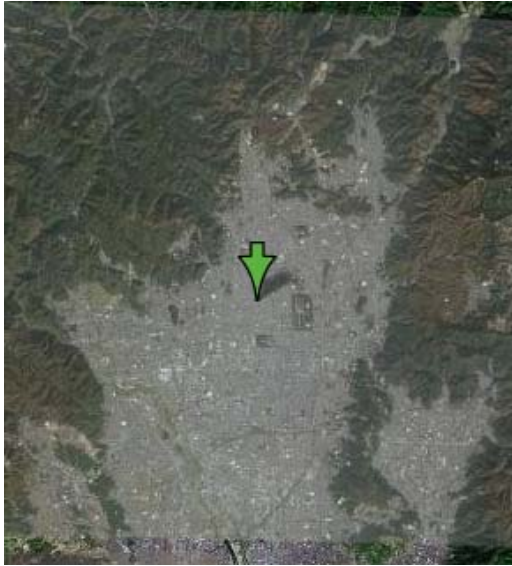
Little Kyoto “Takehara(in Hiroshima-Ken)”



Don't you look alike?



Do you see this satellite photo, and don't think that it looks alike in anything?



鴨川市(千葉県)

Conclusion

- There is a regular change in the name.
- One name becomes a start, and shows a tendency to form similar ontology.
- The database of place-names becomes the effective tool which analyzes them and which is made possible.
- GIS will explain that more effectively.



**Thank you
for your attention.**

