



# A Design of Spatial-temporal Information System in Biographies of Chinese Buddhist Eminent Monks

Huimin Bhikkhu , Aming Tu,  
Fayuan Shi, Chiaming Lee

**Chung-Hwa Institute of Buddhist Studies,  
Taiwan, ROC**

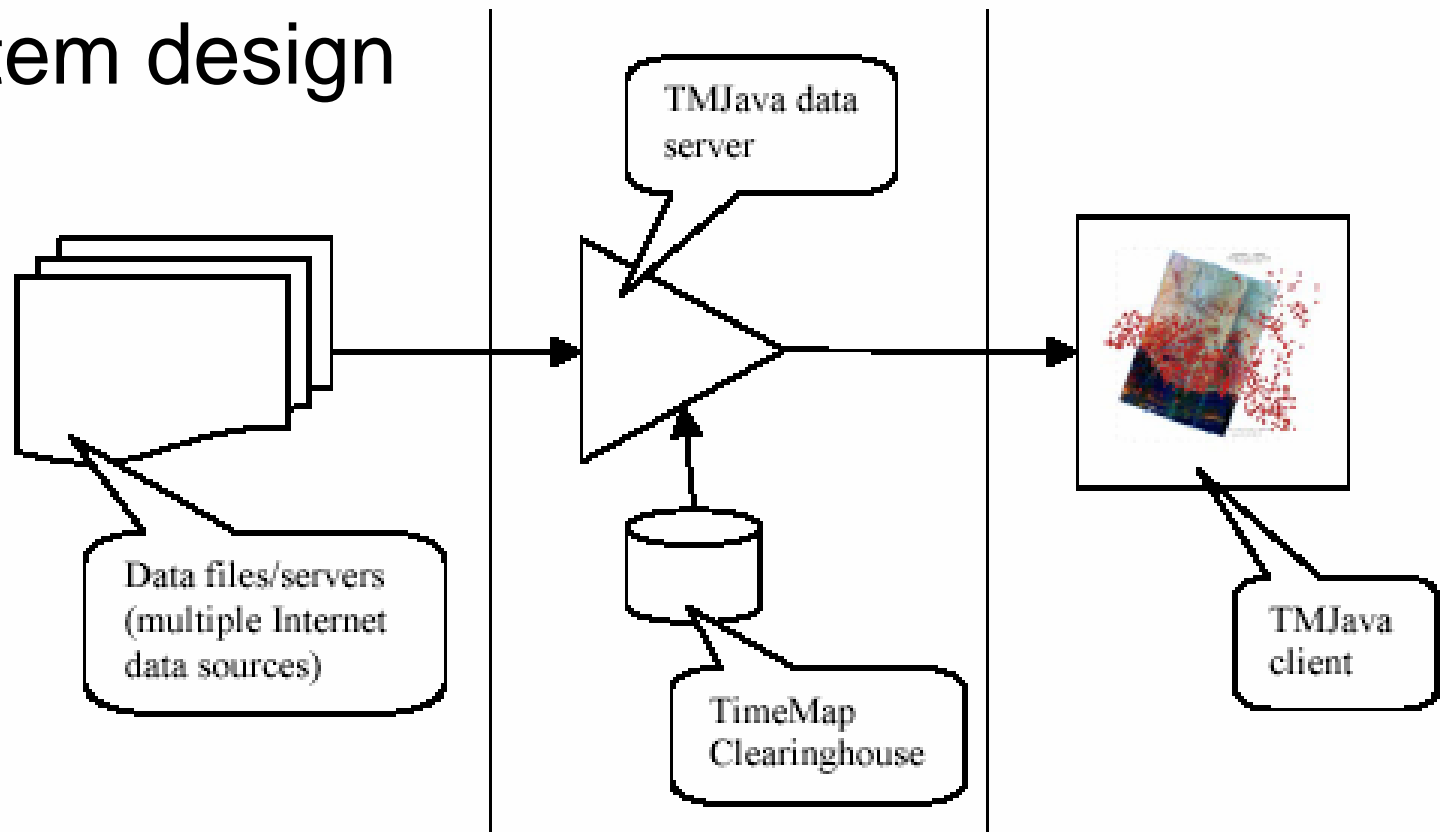


# Introduction

- The application of TimeMap technology in biographies of Chinese Eminent monks.
- To integrate the literature, index and temporal-spatial information.
- Try to develop a creative research platform for digital Buddhism biographies.

# Method

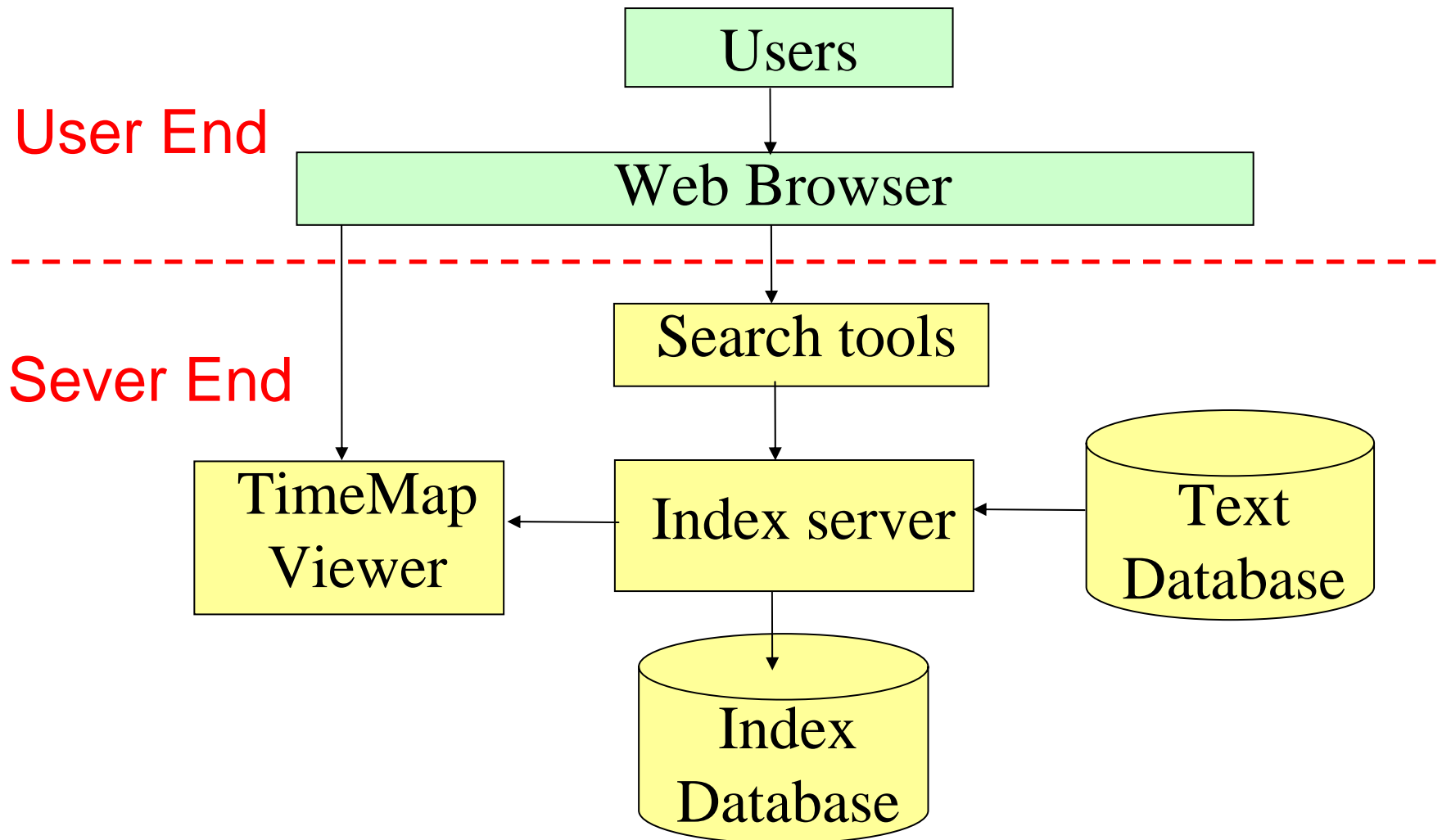
- Data processing
- System design



# Data processing

- **Indexing**- set up index Database in time, place, monks, temple, text, event, etc.
- **Integration**- collect temporal and spatial information and presented together.
- **Statistics**- provide quantitative data and several charts for further analysis.
- **Data warehousing**- provide clustering and mining function for advance research.

# System design



# System Web



Biography of Chinese Buddhist Eminent Monk using GIS

## 《高僧傳》時空地理系統

[專案計畫書] [經錄資料庫] [藏經資料庫] [絲路資料庫] [網頁導覽]

時空地圖  
僧傳文本

住錫行跡  
高僧年表

索引彙整  
綜合查詢

資料統計  
資料探勘

External Database

Main Functions

學研究所

Chung-Hwa Institute of Buddhist Studies

# Main Function

## 1. biography map —

Using TimeMap Viewer to display the geography distribution of Buddhism Eminent Monks.

## 2. biography literature —

to display the literature of previous Eminent Monk's biography according to the classification.

# Biography map



## Biography of Buddhist Eminent Monks using GIS

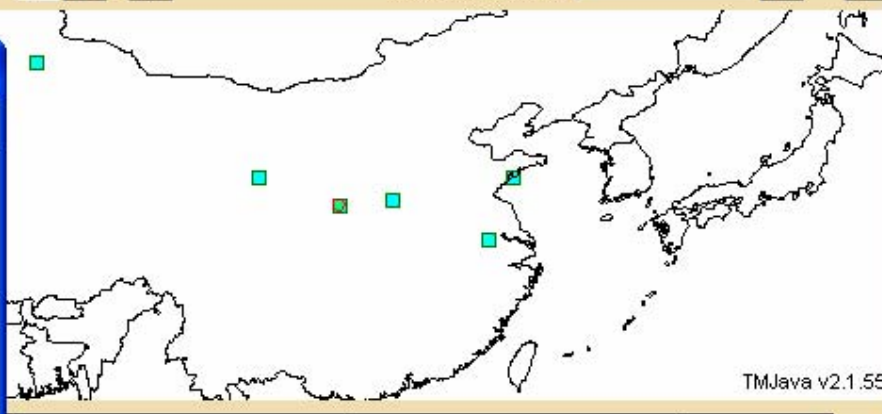
### 《高僧傳》時空地理系統

[專案計畫書] [經錄資料庫] [藏經資料庫] [絲路資料庫] [系統架構]

test *HTML templates: For disk or standalone web page For client/server web page*  
*Cut-and-paste Applet section from html source to embed this map in your web page*

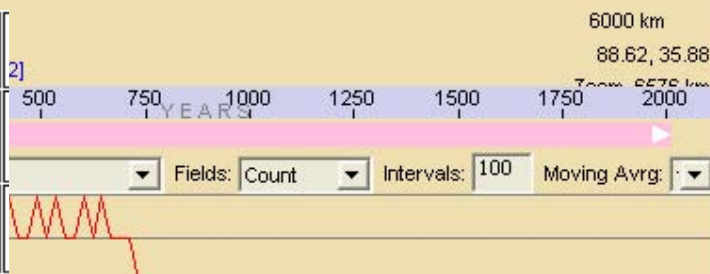
TimeMap© TMJava, Univ. of Sydney

www.timemap.net



Attribute Data							
ID	LAT_	LON_	SDATE	EDATE	Attrib1	Attrib2	LINK_
1	36.01	120.31	350	400	Qingdao	pl1	pl1
2	32.01	118.71	400	450	Nanjina	pl2	pl2
3	34.61	112.41	450	500	Luoyang	pl3	pl3
4	34.21	108.91	500	550	Sian	pl4	pl4
5	36.01	103.71	550	600	Lanchow	pl5	pl5
6	43.58	89.11	600	650	Turfan	pl6	pl6
7	34.28	69.11	650	700	Kabul	pl7	pl7

名字	內容	頁數
長安	1. 菩提流支傳，平陽王爲侍中斛斯椿所挾西奔——…… 於——故城四天王寺譯定意天子問經六部	428c— 9c
長安	2. 闍那崛多傳，以周明帝武成年初屈——止草堂寺	433c



# Biography literature



## Biography of Buddhist Eminent Monks using GIS

### 《高僧傳》時空地理系統

[專案計畫書] [經錄資料庫] [藏經資料庫] [絲路資料庫] [系統架構]

時空地圖

僧傳文本

住錫行跡

高僧年表

索引

綜合查

資料統

資料探

類別	人數	高僧法名
譯經	(上)15	攝摩騰一·竺法蘭二·安清三·支樓迦讖四·曇柯迦羅五·康僧會六·維祇難七·竺曇摩羅剎八·帛遠九·帛尸梨密十·僧伽跋澄十一·曇摩難提十二·僧伽提婆十三·竺佛念十四·曇摩耶舍十五
	(中)7	鳩摩羅什一·弗若多羅二·曇摩流支三·卑摩羅叉四·佛陀耶舍五·佛跋陀羅六·曇無讖七
	(下)13	釋法顯一·釋曇無竭二·佛馱什三·浮陀跋摩四·釋智嚴五·釋寶雲六·求那跋摩七·僧伽跋摩八·曇摩密多九·釋智猛十·[彌-弓]良耶舍十一·求那跋陀羅十二·求那毘地十三

梁高僧傳—法顯大師 [略傳]

No. 2059 高僧傳 (卷2) T50, p0337b

釋法顯姓龔。平陽武陽人。有三兄並髻鬣而亡。父恐禍及顯。三歲便度為沙彌。居家數年病篤欲死。因以送還寺信宿差。不肯復歸。其母欲見之不能得。後為立小屋於門外以擬去來。十歲遭父憂。叔父以其母寡獨不立。逼使還俗。顯本不以有父而出家也。正欲遠塵離俗故入道耳。叔父善其言乃止。頃之母喪。至性過人。葬事畢仍即還寺。嘗與同學人於田中刈稻。時有飢賊欲奪其穀。諸沙彌悉奔走。唯顯獨留。語賊曰。若欲須穀隨意所取。但君等昔不布施。故致

苞九·釋僧詮十·釋曇鑿十一·釋慧安十二·釋曇無成十三·釋僧含十四·釋僧徹十五·釋曇諦

# Main Function (cont.)

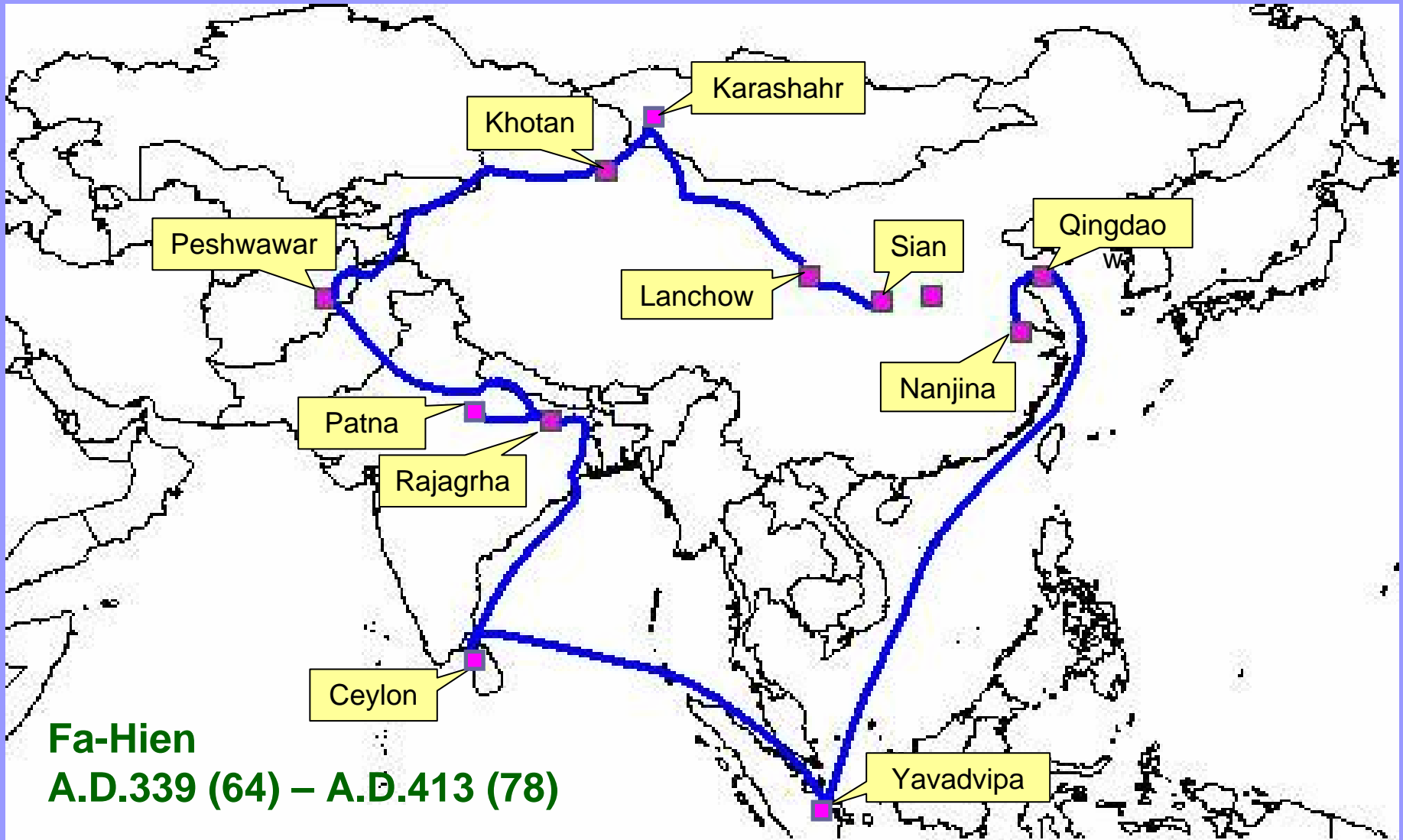
3.monk's tracks —

to organize the travel and pilgrim places of eminent monks into diagrams or dynamic simulation in TimeMap.

4.monk's chronicle—

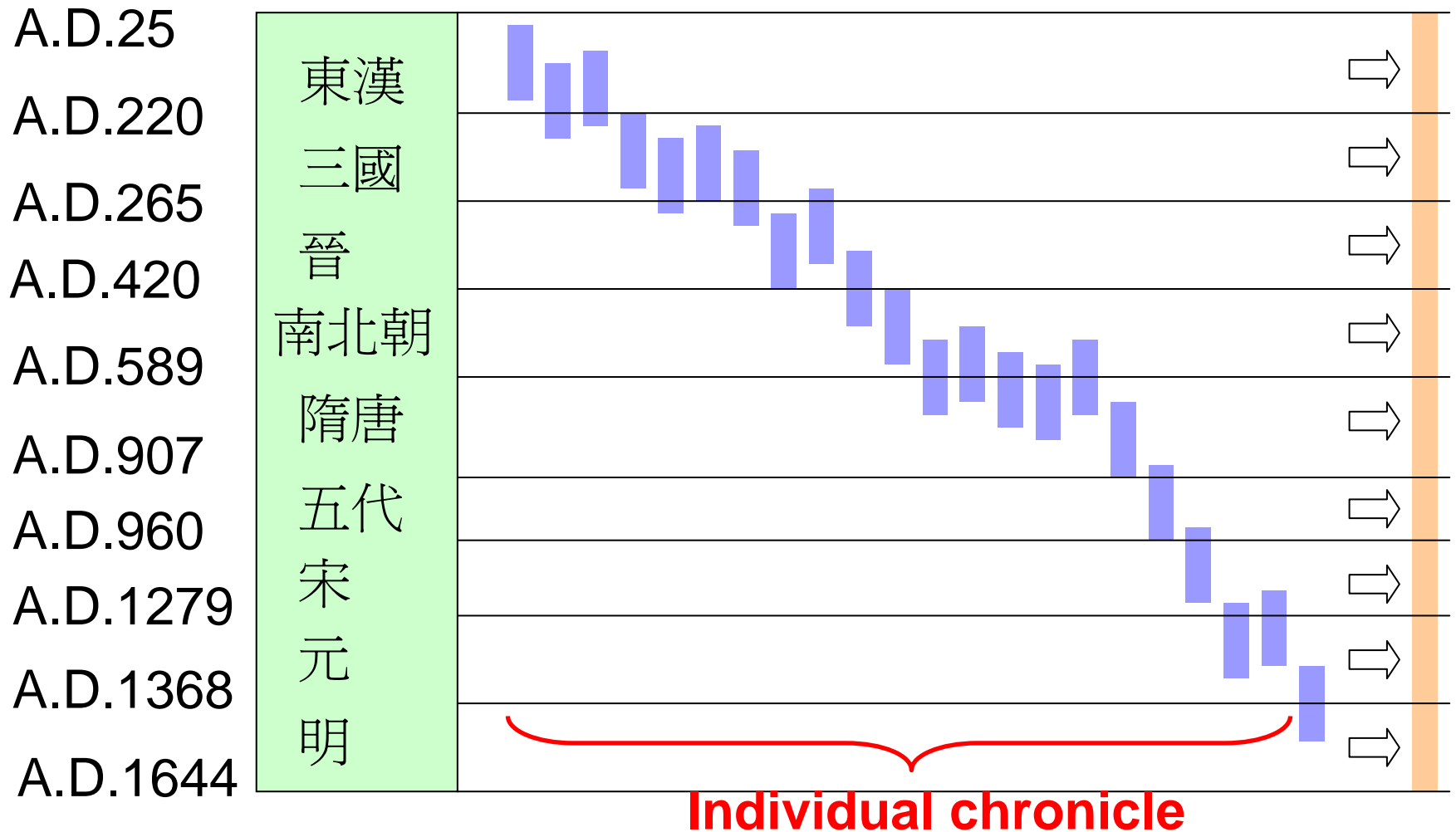
collecting the chronicle of individual eminent monk will assemble for the cross dynasty chronicle of Chinese Buddhism.

# Eminent Monk's Tracks



# Eminent Monk's Chronicle

Cross-dynasty chronicle



# Main Function (cont.)

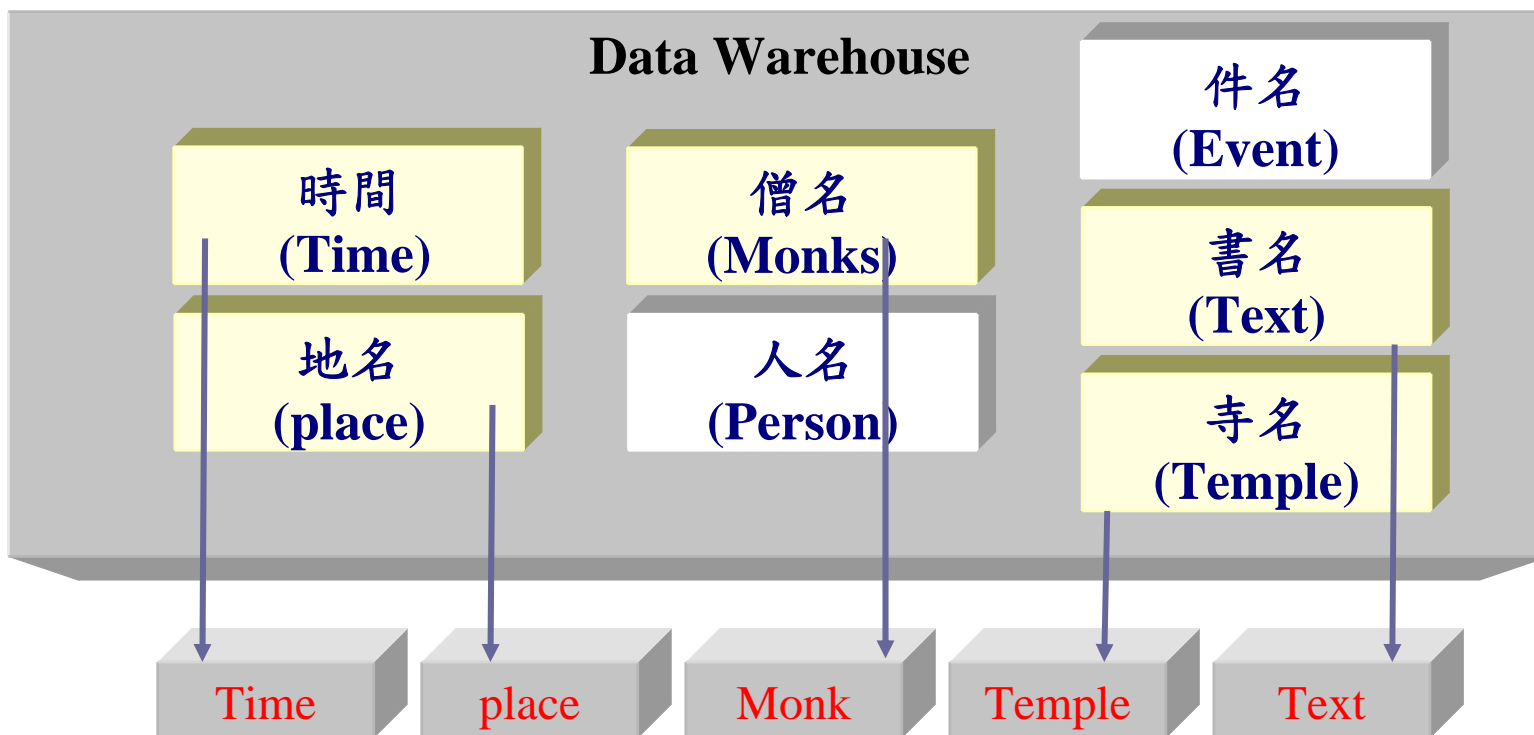
## 5. Index collection —

it collects the indexes of monks, person, place, temple, text, event, etc. to link with the literatures of biography.

## 6. Synthesis retrieval —

to provide kinds of search function for text retrieval and On Line Analytical Processing.

# Index Collection



Time	place	Monk	Temple	Text
開元	長安	釋智昇	崇福寺	撰開元釋教錄二十卷
開元	長安	釋道氤	青龍寺	後撰大乘法寶五門名教并信法儀各一卷
開元	長安	釋潛真	興善寺	述菩提心義發菩提心戒三聚淨戒及十善法戒各一卷
開元	長安	釋道宣	西明寺	撰續高僧傳三寶錄羯磨戒疏行事鈔義鈔等二百二十餘卷

# Index Collection



Biography of Buddhist Eminent Monks using GIS

## 《高僧傳》時空地理系統

[專案計畫書] [經錄資料庫] [藏經資料庫] [絲路資料庫] [系統架構]

時空地圖

僧傳文本

住錫行跡

高僧年表

索引查詢

綜合彙整

資料統計

資料探勘

### 唐朝高僧傳索引查詢系統

[其它查詢](#)



請選擇欲修改之資料庫

請輸入您想查尋的類別

請輸入索引字  【例:阿、藹、安】

請輸入名詞  【例:阿難、藹明】

請輸入欲查內容  【例:玄奘傳--分身處】

筆數	ID	頁數	日文字首	字首	名字	內容	頁數	僧傳
1	3	3	ア	阿, 藹, 安	阿難	4.玄奘傳, 一一分身處	<a href="#">450c</a>	玄奘
2	18	3	イ	姨, 異, 遺, 懿, 育, 印, 因, 胤, ÿ, 韻	姨母	4.玄奘傳, 身子證果處一一滅度處	<a href="#">450c</a>	玄奘

# Synthesis retrieval

## 高僧傳時空地理系統

Biography of Buddhist Eminent Monks using GIS

[專案計畫書] [經錄資料庫] [藏經資料庫] [絲路資料庫] [系統架構]

- Home  
回到首頁
- Biography Map  
時空地圖
- Biography Literature  
僧傳文本
- Monk's Tracks  
住錫行跡
- Monk's Chronic  
高僧年表
- Index Collection  
索引彙整
- Composite Search  
綜合查詢
- Statistics Data  
資料統計
- Data Mining  
資料探勘

[歷代高僧地理分佈查詢](#)

[歷代高僧駐寺查詢](#)

[高僧地理人數統計](#)

目前您正在檢視有關 **長安** 的資料

朝代	地名	高僧	高僧人數
唐朝	長安	菩提流支, 閻那崛多, 彥琮, 辯奘, 僧旻, 慧善, 靈裕, 道判, 志寬, 智藏, 無礙, 智詵, 慧滿, 道臻, 法安, 智則, 元嵩, 法周, 慧恭, 寶相, 僧晃,	21

有 21 名高僧會出現於長安!

# Main Function (cont.)

## 7. Statistics data —

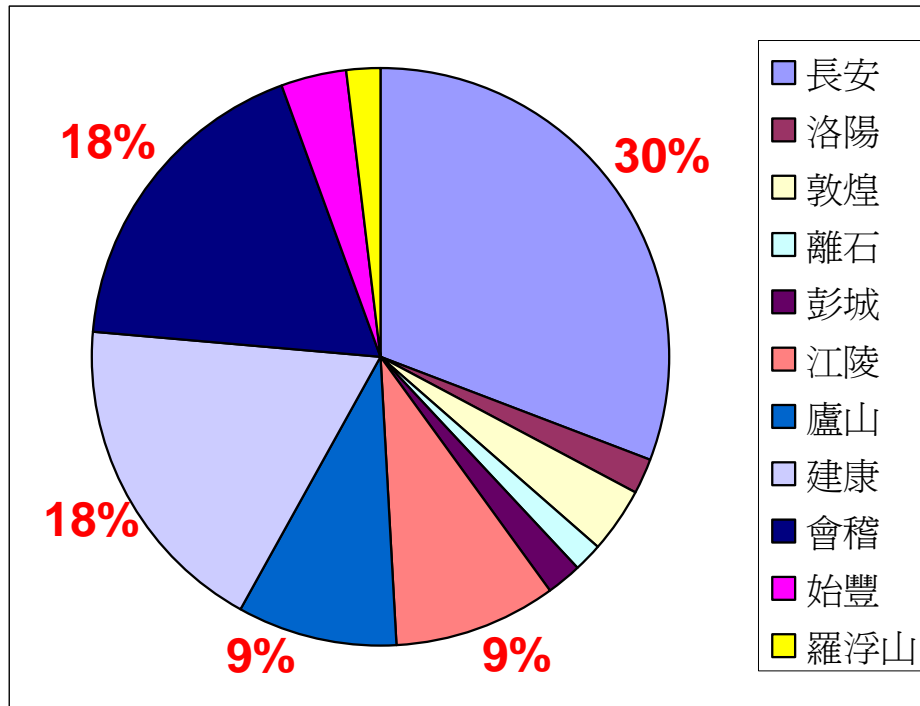
provide the information about the dissemination of Chinese Buddhism in quantitative data and several charts.

## 8. Data mining —

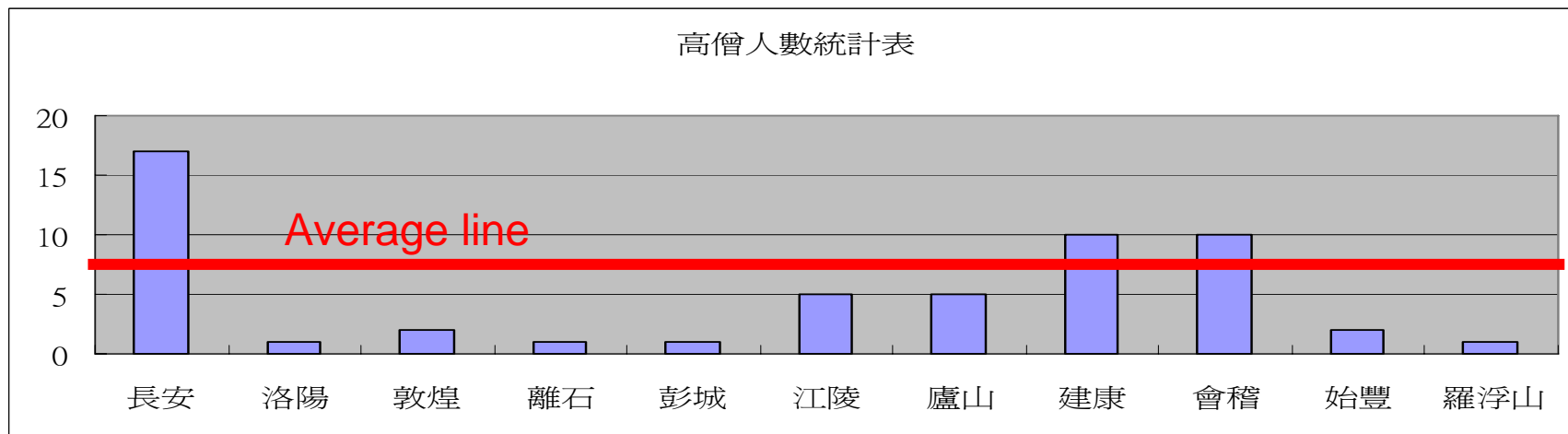
provide clustering and trend analysis function for advanced research in Chinese Buddhism.

# Statistics Data

長安	17
洛陽	1
敦煌	2
離石	1
彭城	1
江陵	5
廬山	5
建康	10
會稽	10
始豐	2
羅浮山	1



高僧人數統計表





# Future development

- Operate in coordination with other digital Buddhist Database, such as the Buddhist text Database of CBETA, the Database of Buddhist Tripitaka Catalogues and so on.
- Establish the whole functions of temporal, spatial and literature research environment in Buddhist studies.

# Conclusion

This system tries to use index server as the middle-tier between literature and the geography information. In the user's end, then using Web browser to integrate text and image material. The system is still under development. In the future, we hope to implement the whole function and help scholar to develop the new research direction in Biographies of Buddhism.